



Fiberglass Gutter Installation Instructions



SAND ALL BONDING AREAS WITH 36 GRIT SANDPAPER (INCLUDED WITH GUTTERGLUE KIT) PRIOR TO APPLYING GUTTERGLUE!

Fiberglass Building Products Inc. accepts no liability or responsibility for the improper installation of this product.

FiberGutter Parts List

SKU#	DESCRIPTION
FG60	4x5 Fiberglass Gutter (27.5')
FG90	4x6 Fiberglass Gutter (27.5')
FG6040	4x5 Fiberglass Gutter (40')
FG9040	4x6 Fiberglass Gutter (40')
FG60EC	4x5 Fiberglass Endcap
FG90EC	4x6 Fiberglass Endcap
FGGLUE	Gutter Glue Seaming Kit
EXT-DISP-220	Manual Applicator Gun
FGO	Fiberglass Gutter Outlet
2P10KIT	2P-10 Adhesive
FGSCREW3	Stainless Structural Screw

Tools Required to complete FiberGutter Installation

Proper Staging (OSHA Approved), Cordless Impact Driver with bit extender, Chop Saw with Diamond Blade, 6' level, Chalk Line, Tape Measure, Latex/Nitrile Gloves, Utility Knife (for trimming excess fiberglass on miters/seams), 2-3/8" Hole Saw (Outlet), Safety Glasses, Rags & Acetone.

Painting FiberGutter

Fiberglass is generally painted with the trim boards after installation. In general paint will stick to fiberglass 5 times longer than wood.

Surface Preparation

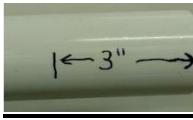
Use 80 Grit sandpaper over the entire surface of the gutter that is going to be painted. For best adhesion it is recommended to just sand until the gloss is no longer visible.

Wipe clean with acetone before and after sanding for best results.

Paint Application

We have found that pretty much any exterior acrylic latex paint/primer combo works very well. 2 Coats is recommended. We insist that you follow the recommendations of the paint manufacturer.

Outlet Installation



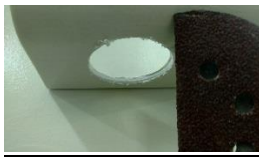
Cut 2" PVC SCH 40 Pipe to a 3" length



Sand outlet where it will bond to fiberglass



Drill straight up through gutter with a 2-3/8" hole saw



Use Sandpaper to lightly clean up edge and increase bond strength. Give it a quick wipe with acetone



Outlet should be a tight fit to gutter. If it is loose or will not sit straight use 2P10 Superglue to hold it in place while applying final bonding agent.

Use GutterGlue to complete outlet Installation

Miter / Seaming Installation

Use GutterGlue Seaming Kit to seal miter on inside. Complete miter/seam after hanging gutter. If outside needs touch up you can use GutterGlue and sand after curing. Kit Includes, Fiberglass Tape (2), GutterGlue, Mixing Tips, Tongue Depressors & Sandpaper.

Note: There is enough in one GutterGlue kit to complete 2 Miters/Seams



Make sure area 2" on either side of seam has been sanded (36 Grit ONLY).

Tip: Do this at cut station before hanging gutter

Use 2P10 adhesive (recommended) to temporarily hold seam together

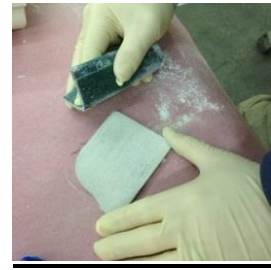


Wet out Fiberglass Tape with GutterGlue and lay into Miter/Seam.



Use tongue depressor to wet out inside of seam with GutterGlue over fiberglass tape. Make sure to cover area so no fiberglass is showing and there are no voids. Trim excess fiberglass with utility knife and add some more glue to finish the top of gutter (Front and Back)

Endcap Installation



Sand any bonding surfaces where the endcap is to be installed (including on the gutter).

Wipe with Acetone



Apply 2P10 Adhesive



Stick Endcap in place so that it is flush with edge of gutter

Give area another wipe clean once endcap is in place



Use GutterGlue along edge of intersection between gutter & endcap. You can use your finger (with glove on) to smooth it out.